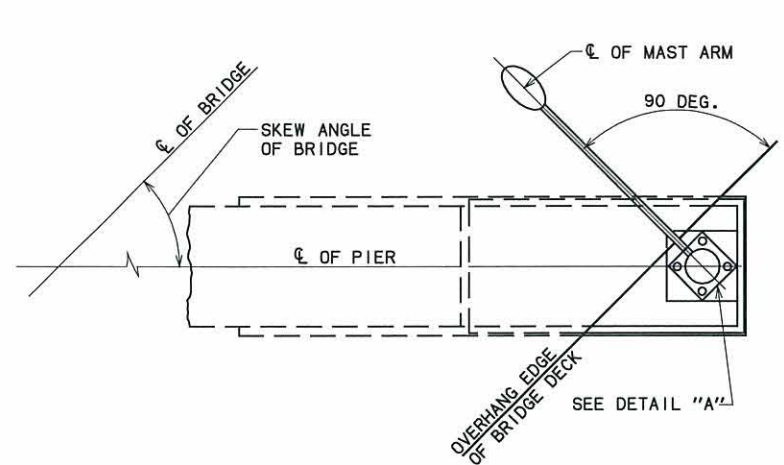
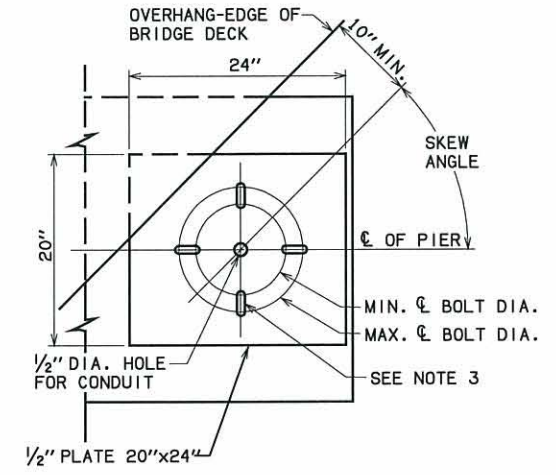


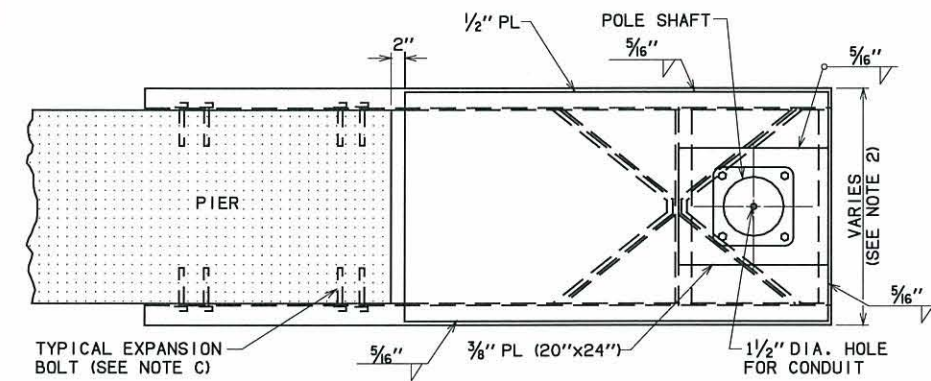
DESCRIPTION	REVISIONS	DATE



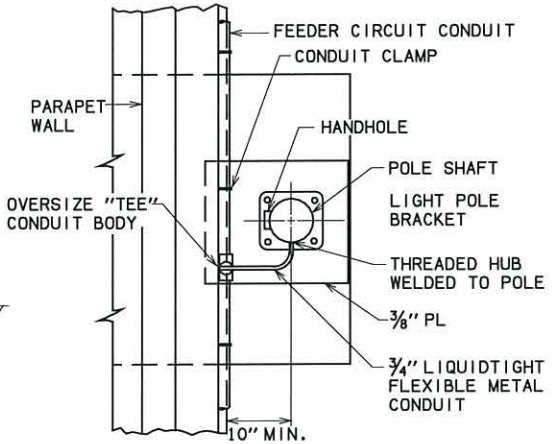
**SKEWED MOUNTING DETAIL**



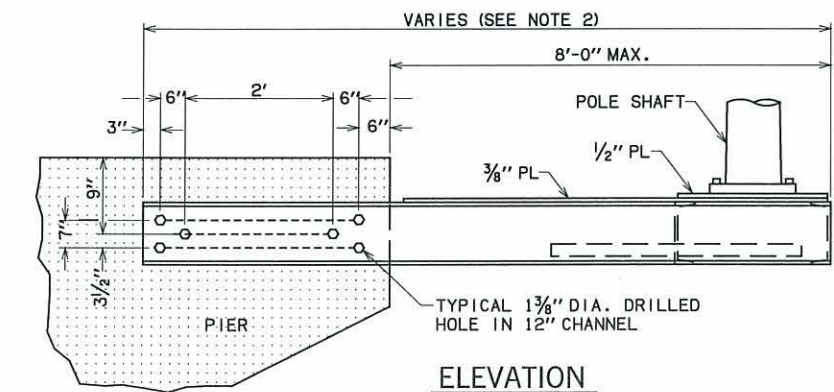
**DETAIL "A"**



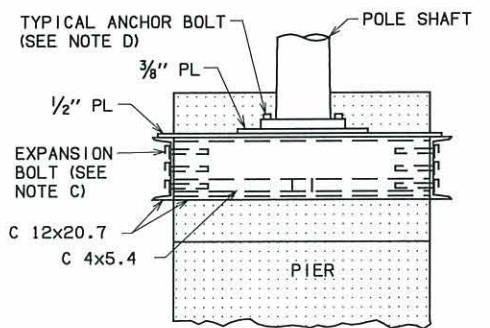
**PLAN**



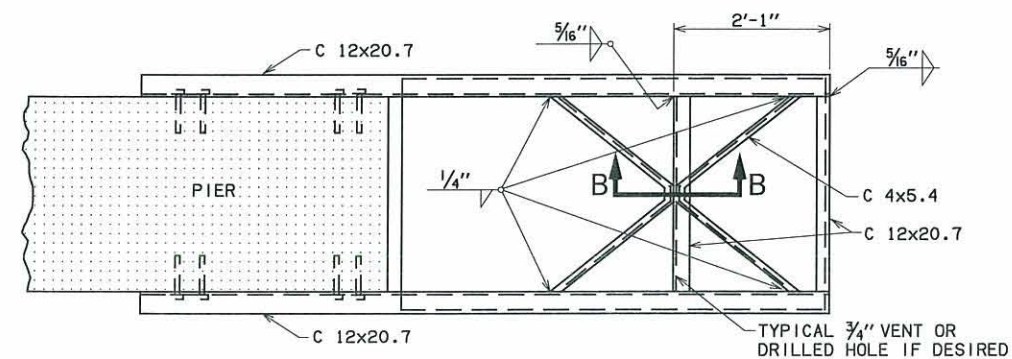
**SECTION "A-A"**



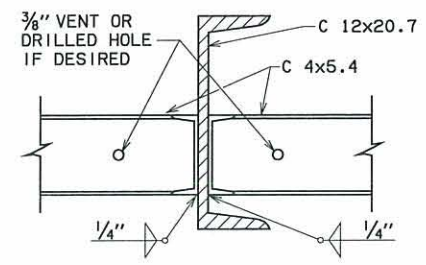
**ELEVATION**



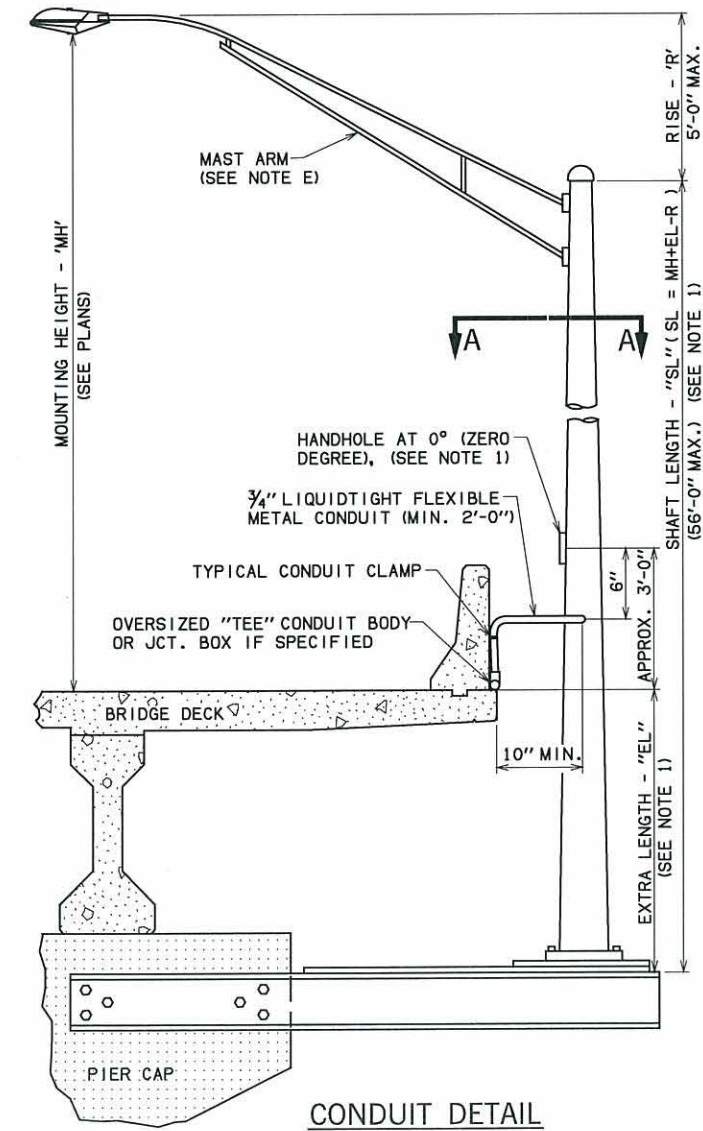
**END VIEW**



**BOTTOM VIEW**



**SECTION "B-B"**



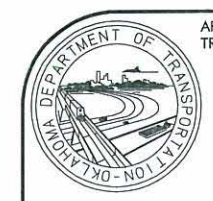
**CONDUIT DETAIL**

**MATERIAL SPECIFICATIONS**

- A. ALL STRUCTURAL STEEL AND PLATES SHALL CONFORM TO ASTM A-36 (AASHTO M-183).
- B. THE BRACKET, POLE, AND MAST ARM SHALL BE GALVANIZED IN ACCORDANCE WITH ASTM A-123 (AASHTO M-111) AFTER ALL FABRICATION SUCH AS CUTTING, WELDING, DRILLING, OR PUNCHING HAS BEEN COMPLETED.
- C. EXPANSION BOLTS - 12 REQUIRED AND SHALL BE 1" DIA. x 9" LONG WITH 4 EXPANSION SLEEVES PER BOLT. BOLTS SHALL BE ASTM-A325 (AASHTO M-164), OTHER BOLTS CAN BE USED IF THEY MEET THE REQUIREMENTS OF ASTM-A325 (AASHTO M-164), AND HAVE THE FOLLOWING MIN. STRENGTH BY TEST, PULLOUT - 18,000 LB., SHEAR - 10,000 LB., THE EXPANSION BOLT SHALL BE SET IN CONCRETE A MINIMUM OF 6" WITH A 1" DIAMETER HEAVY FLAT WASHER PER BOLT.
- D. ANCHOR BOLTS - 4 REQUIRED AND THEY SHALL BE 1 1/4" DIA. HIGH STRENGTH BOLTS, ASTM A-325.
- E. FOR ADDITIONAL POLE AND MAST ARM DESIGN CRITERIA, MATERIAL SPECIFICATIONS, AND DETAILS, SEE STD. HLP1-1-, AND HLP2-1-(LATEST REVISION).

**GENERAL NOTES**

- 1. THIS PIER MOUNTED BRACKET REQUIRES A SPECIAL LENGTH POLE IN ORDER TO MAINTAIN THE MOUNTING HEIGHT AS SPECIFIED IN THE PLANS, ABOVE THE BRIDGE DECK. THE DIMENSIONS SHALL BE VARIFIED BY THE CONTRACTOR. THE LOCATION OF THE FEEDER CIRCUIT AND THE HEIGHT OF THE PARAPET WALL WILL DETERMINE THESE DIMENSIONS, SEE STANDARD HLP3-1-(LATEST REVISION).
- 2. ACTUAL DIMENSIONS OF THE BRACKET SHALL BE DETERMINED BY FIELD MEASUREMENTS AT EACH PIER LOCATION. THE LIGHTING CONTRACTOR SHALL BE RESPONSIBLE FOR THESE MEASUREMENTS.
- 3. THE MOUNTING PLATES SHALL HAVE SLOTTED HOLES FOR THE 1/4" DIA. ANCHOR BOLTS. THESE SLOTTED HOLES SHALL HAVE MAX. BOLT CIRCLE DIAMETER OF 13 1/2" (9 5/8" RECTANGLE) AND MINIMUM BOLT CIRCLE DIA. OF 11 1/2" (8 5/8" RECTANGLE). IF IT IS NECESSARY TO CHANGE THE DIMENSIONS OF THE SLOTTED ANCHOR BOLT HOLES, THE CHANGES SHALL BE APPROVED BY THE ENGINEER.
- 4. THE PRICE BID FOR PIER MOUNTED BRACKET SHALL INCLUDE ALL MISC. HARDWARE, EXPANSION BOLTS, AND CONDUIT TO THE CONNECTION WITH THE MAIN FEEDER CIRCUIT.
- 5. FOR ADDITIONAL TYPICAL CONDUIT CONSTRUCTION DETAILS, SEE STANDARD CCD2-1-(LATEST REVISION).



APPROVED BY TRAFFIC ENGINEER: *David Small* DATE: 8/15/10

TRAFFIC STANDARD  
TYPICAL PIER MOUNTED LIGHT POLE  
AND BRACKET DETAILS